



**INNOVATION WORKING FOR YOU**

**LR30  
Lawn Roller  
Operator's and Parts Manual**



REIST Industries Inc.  
100 Union Street  
Elmira, Ontario, Canada  
N3B 3L7

Phone: 519-669-1501  
Fax: 519-669-3021  
Toll Free: 1-877-467-3478  
[www.reistindustries.com](http://www.reistindustries.com)

Effective Serial Number W3505



## Contents

INTRODUCTION.....	4
PRODUCT SPECS .....	5
GENERAL SAFETY PRECAUTIONS .....	5
MAINTENANCE .....	7
SPEED & NEUTRAL ADJUSTMENT .....	8
TRANSPORTING.....	9
ITEM LOCATOR: .....	10
HANDLE & CONTROL BRACKET ASSEMBLY.....	11
TRANSMISSION & CONTROL PARTS .....	12
MOTOR ASSEMBLY PARTS.....	13
CHAIN TENSIONER & FREE WHEELING LEVER PARTS.....	14
TRANSMISSION SHAFT PARTS .....	15
PACKER ROLL ASSEMBLY DIAGRAM .....	16
PACKER ROLL ASSEMBLY PARTS LIST .....	17
SMALL ROLL & SCRAPER ASSEMBLY .....	18
WARRANTY INFORMATION.....	19

Record your product information for future reference:

Model Number: \_\_\_\_\_

Serial Number: \_\_\_\_\_

In Service Date: \_\_\_\_\_

Sold By: \_\_\_\_\_

# INTRODUCTION

Thank you for choosing the REIST LR30 Roller.

We feel confident that this equipment will meet your expectations in workmanship, reliability and performance when used as designed. This manual is to assist you with the safe operation of the REIST LR30 Roller. It also has a parts list to help you when replacement parts are required. Any person who will be assembling, maintaining, or operating this product, is required to read and completely understand the information and instructions contained in this manual. Always obtain further assistance by contacting the dealer from which this product was purchased or by contacting REIST Industries at the telephone number or address below. Keep this manual available for reference whenever this product is being handled or used and we recommend that it is reviewed periodically and before seasonal use. Provide this manual to any new owners and/or operators and ensure they fully understand the safe operation of this equipment before it is placed in service.

Replacement copies of this manual are available for downloading at:  
[www.reistindustries.com](http://www.reistindustries.com)

## Innovation Working For You

### **REIST Industries Inc.**

100 Union Street  
Elmira, Ontario, Canada  
N3B 3L7

Phone: 519-669-1501  
Fax: 519-669-3021  
Toll Free: 1-877-467-3478

The illustrations and information contained within this manual were current at the time of publication. Under our policy of continuous improvement, we reserve the right to change specifications and designs without prior notice. The illustrations do not necessarily show the standard version of product offered by REIST Industries.

## PRODUCT SPECS

### LR30 Lawn Roller

- Operates forward and reverse
- Unit easily movable without starting the engine
- Powered by a 5.5 horsepower Honda gasoline engine. See Honda manual (included) for operation instructions
- Eaton hydrostatic transmission
- Power is delivered to the drum via a series of sprockets, jack shaft and chains
- 35-7/8" wide x 62" long x 45-1/2" high
- Drum width 30"
- Dry Weight 530 lb (240 kg),
- Drum Filled Weight 920 lb (416 kg)

## GENERAL SAFETY PRECAUTIONS

Careful operation is the best assurance against accidents. It is the owner's responsibility to make sure that all operators read and understand this manual and follow the recommendations, cautions and warnings before operating the equipment.

Familiarize yourself with all controls and know how to quickly stop the equipment and all rotating parts in the case of an emergency.

Never let an untrained person or a child operate equipment.



### **WARNING!**

#### **DO NOT MODIFY THE REIST EQUIPMENT**

Modifications may weaken the integrity of the equipment and may impair the operation, safety, and performance of the product. When making repairs, only qualified technicians using the manufacturer's genuine parts, following authorized instructions, shall attempt the repair. Never remove guarding or other safety device. Any modifications must be sanctioned in writing by an authorized representative of the manufacturer.



## **WARNING!**

### **MAINTAIN AND REPAIR EQUIPMENT SAFELY**

- Do not wear loose clothing, or any accessories that can catch in moving parts
- If you have long hair, cover or secure it so that it does not become entangled in the equipment
- Work on a level surface in a well-lit area.
- Always secure and support it to prevent unintentional movement
- Use the correct tool for the job at hand. Make sure they are in good condition for the task required
- Wear the protective equipment specified by the tool manufacturer
- Use care when working on hydraulic systems and understand how to check for and release trapped hydraulic pressure



## **WARNING!**

### **READ OPERATOR'S MANUAL BEFORE OPERATING**

Do not operate equipment until you have been trained by a qualified person in how to safely use the controls, understand the machine's capabilities, dimensions, and all safety requirements. Refer to your operator's manual for these instructions.

- Do not operate an engine in confined or non-ventilated area
- Do not perform adjustments or repairs with the engine running
- Do not operate on excessive inclines or side slopes– be careful when turning on slopes as a rollover condition may exist
- Keep bystanders away from the machine when in operation
- Be aware of pedestrians
- Know how to quickly stop the equipment in the case of an emergency

## MAINTENANCE

Refer to the General Safety Precautions, in previous pages of this manual before performing any maintenance.

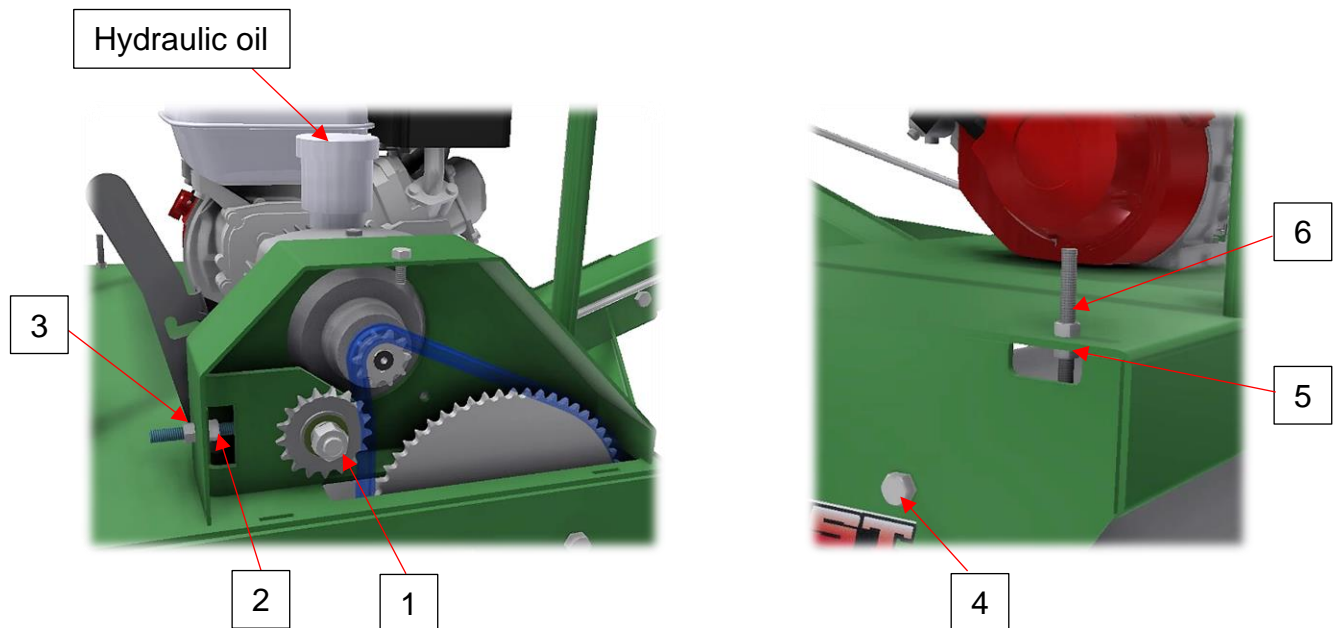
1. At the beginning of each season, ensure that all fasteners are properly torqued, all safety guards are in place and that operator's manual is reviewed and understood
2. Daily, check that oil is at level mark on transmission reservoir (approx. 1/8" from bottom). Check when cool. When hot the level in reservoir will rise.
3. Daily, check engine oil.
4. Keep roller chains snug.

To tighten top roller chain:

- remove shield
- Loosen nut 1 & 3
- Tighten nut 2 till slack is out of chain
- Tighten nut 3 & 1
- Install shield

To tighten lower roller chain:

- Loosen nut 4 & 5
  - Tighten nut 6 till slack is out of chain
  - Tighten nut 5 & 4
5. Remove water from drum if freezing could occur.



## SPEED & NEUTRAL ADJUSTMENT

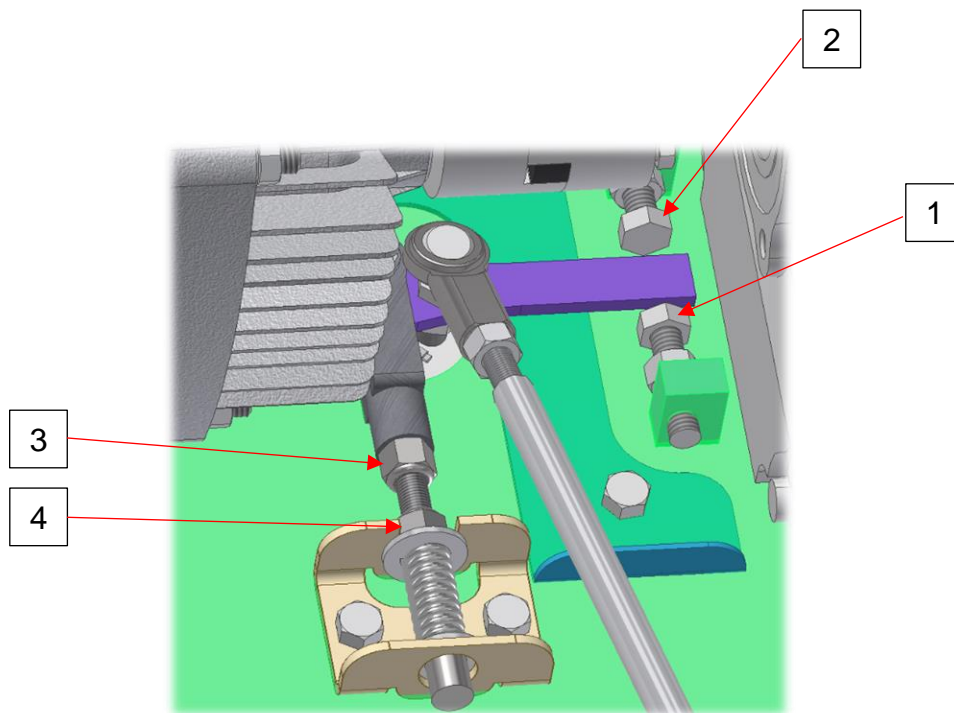
### Speed Adjustment:

There are two stop bolts to adjust speed. Number 1 is for forward speed and Number 2 is for reverse speed. Retracting the bolt, the speed will increase. Turning the bolt in, the speed will be reduced. Tighten the nuts when adjustment is finish. The unit is factory adjusted to run at the following speeds.

- forward 390 feet per minute / 118 meters per minute
- reverse 260 feet per minute / 80 meters per minute

### Creeping Adjustment:

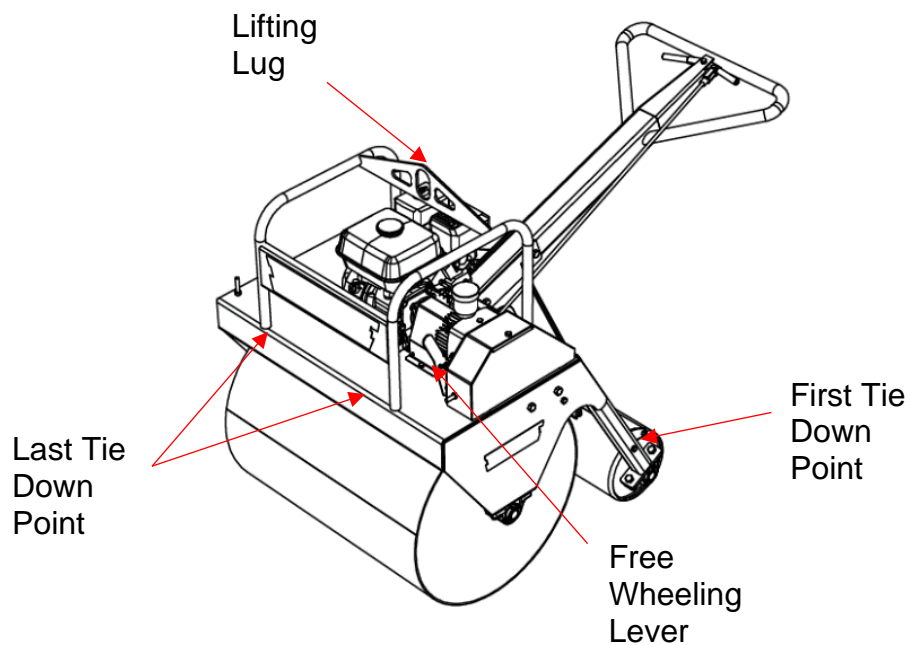
The Neutral Linkage assembly is what puts the transmission into neutral position. If the roller creeps, first check that the forward and reverse lever and linkage is free and is not binding anywhere. If that checks out fine, then adjustment needs to be made. Turn nuts number 3 & 4 left or right until creeping stops. When adjusting, turn the nuts number 3 & 4 the same amount and the same direction.



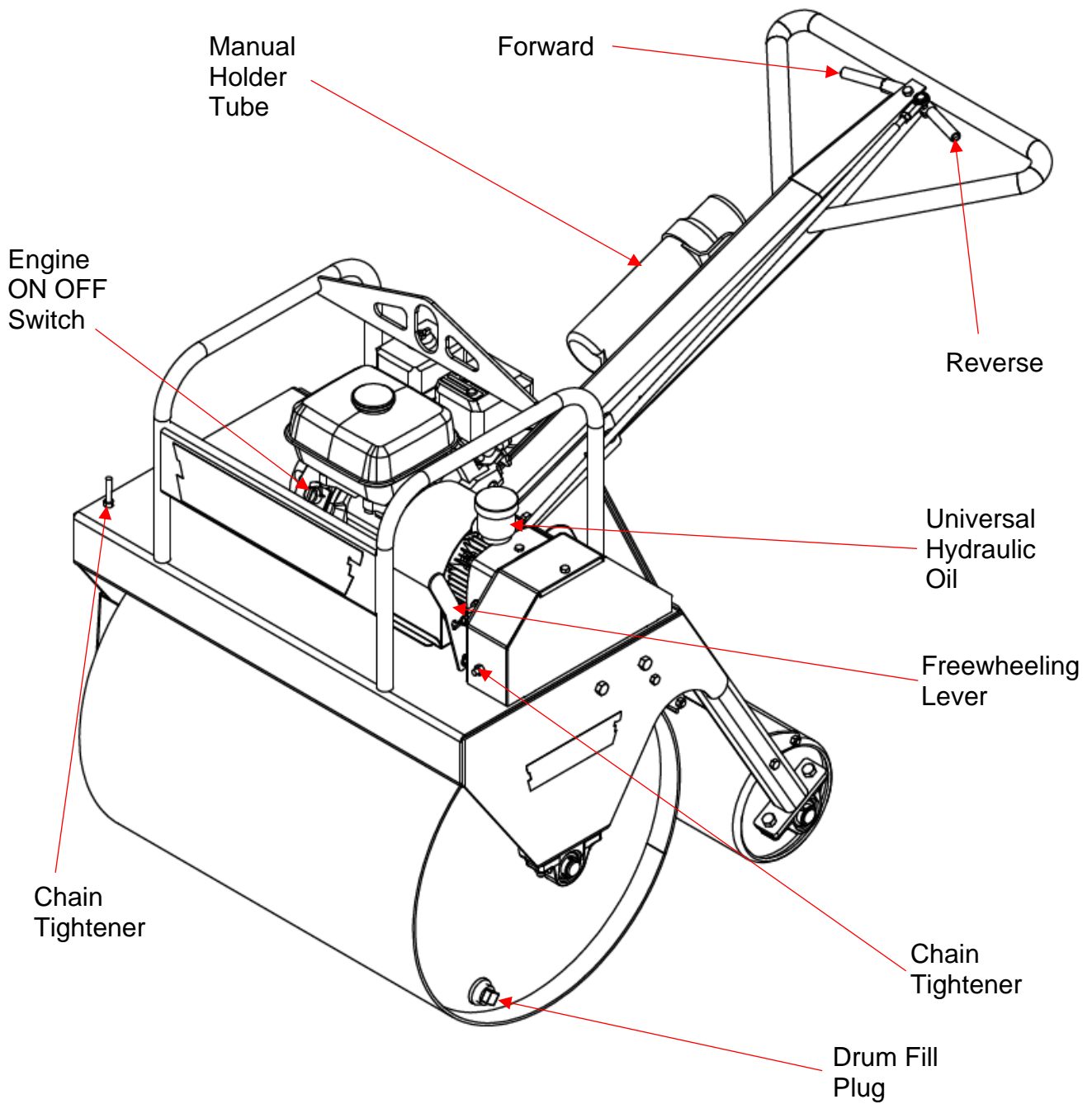


## TRANSPORTING

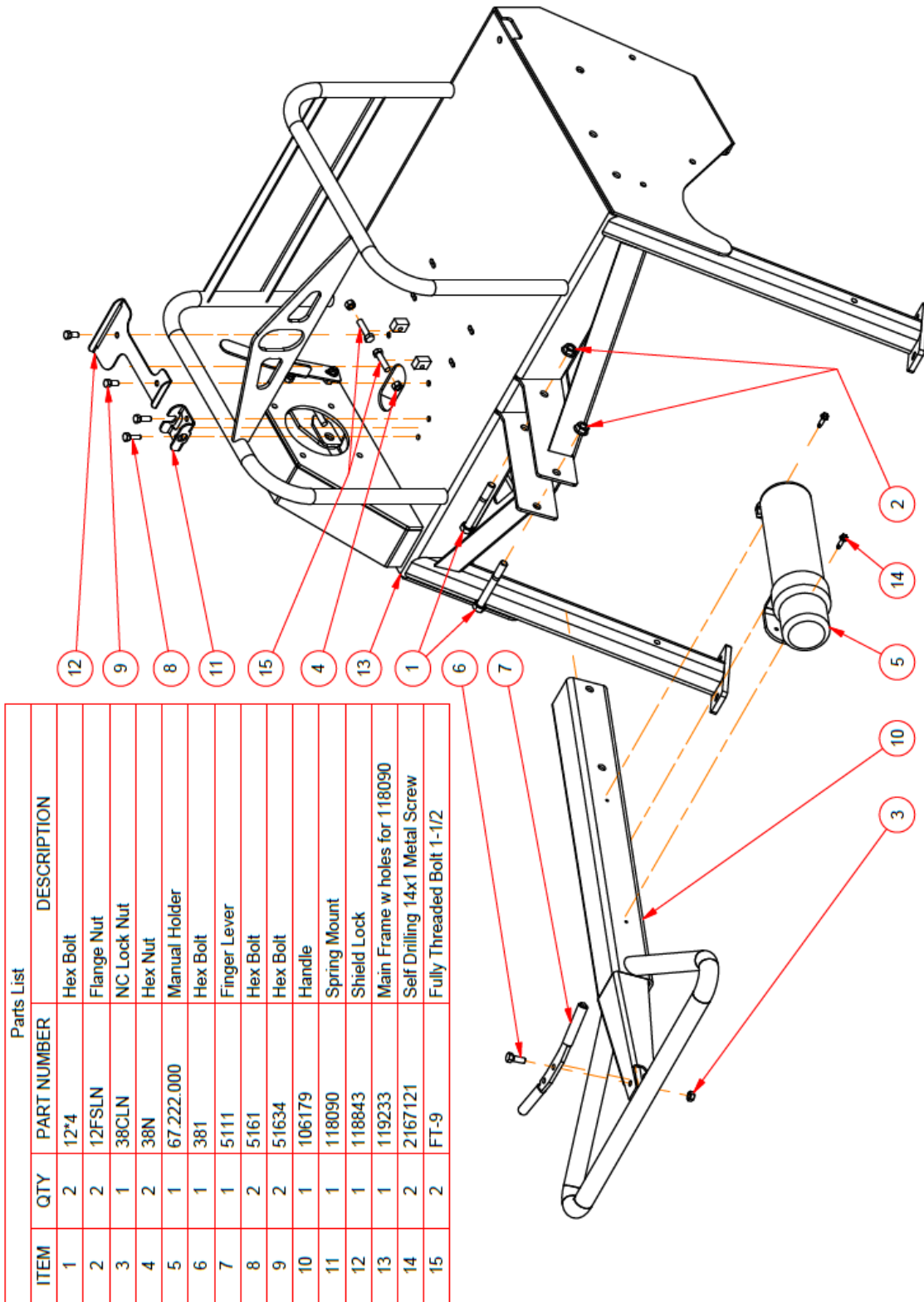
- Whether transporting on a truck or trailer, make sure machine is tied down with appropriate chains or straps. It can cause serious damage or injury if failing do so.
- To keep roller from tipping when securing, tie down at rear roll first then at front.
- Always adhere to the local laws and regulations concerning transporting equipment.
- If the Roller needs to be moved without the engine running, push the lever towards the transmission and down to lock it in place. This puts transmission into freewheeling mode.
- Roller can be lifted by lifting lug above fuel tank.



# ITEM LOCATOR:

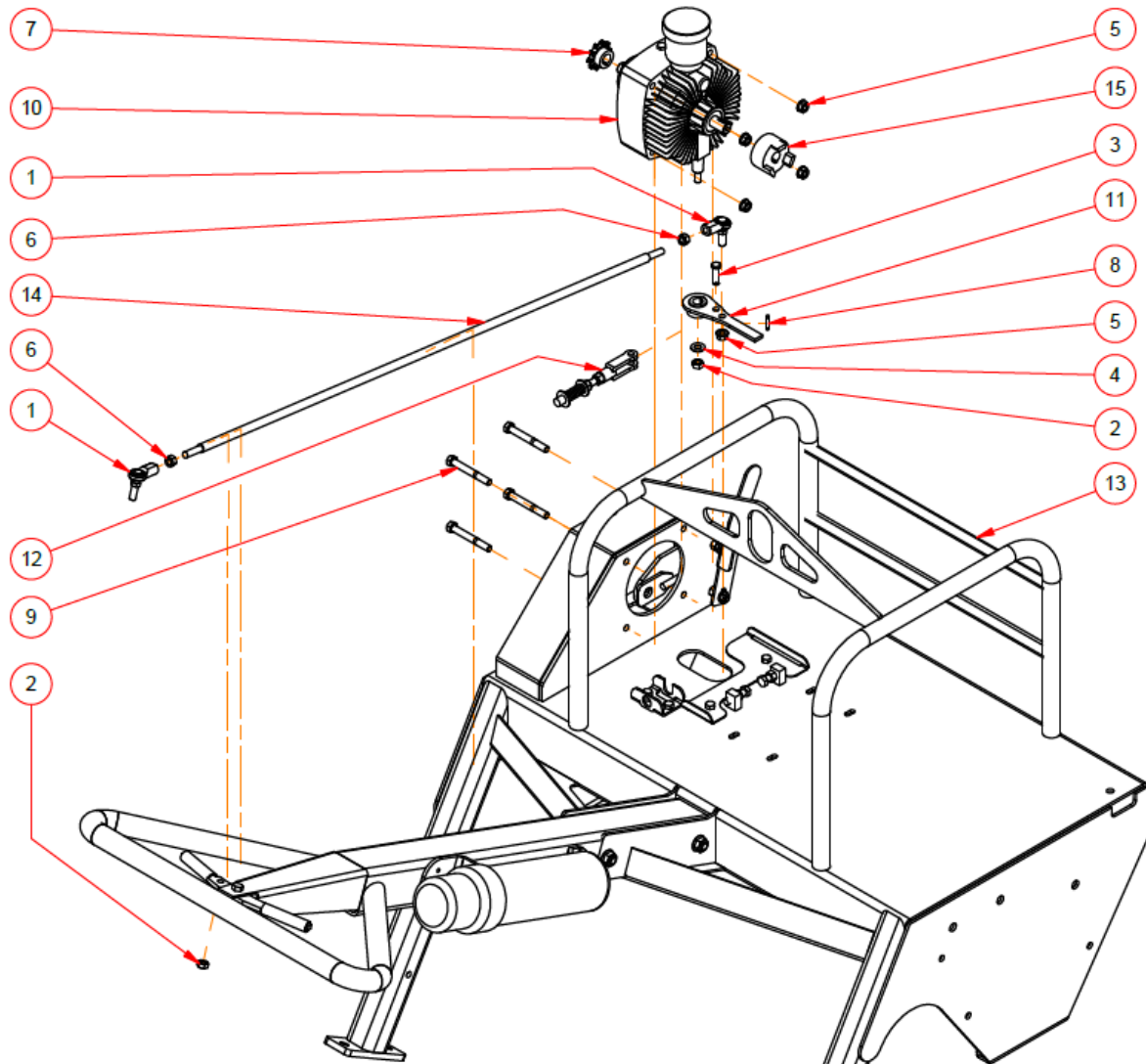


# HANDLE & CONTROL BRACKET ASSEMBLY



Parts List			
ITEM	QTY	PART NUMBER	DESCRIPTION
1	2	12*4	Hex Bolt
2	2	12FSLN	Flange Nut
3	1	38CLN	NC Lock Nut
4	2	38N	Hex Nut
5	1	67.222.000	Manual Holder
6	1	381	Hex Bolt
7	1	5111	Finger Lever
8	2	5161	Hex Bolt
9	2	51634	Hex Bolt
10	1	106179	Handle
11	1	118090	Spring Mount
12	1	118843	Shield Lock
13	1	119233	Main Frame w holes for 118090
14	2	2167121	Self Drilling 14x1 Metal Screw
15	2	FT-9	Fully Threaded Bolt 1-1/2

# TRANSMISSION & CONTROL PARTS

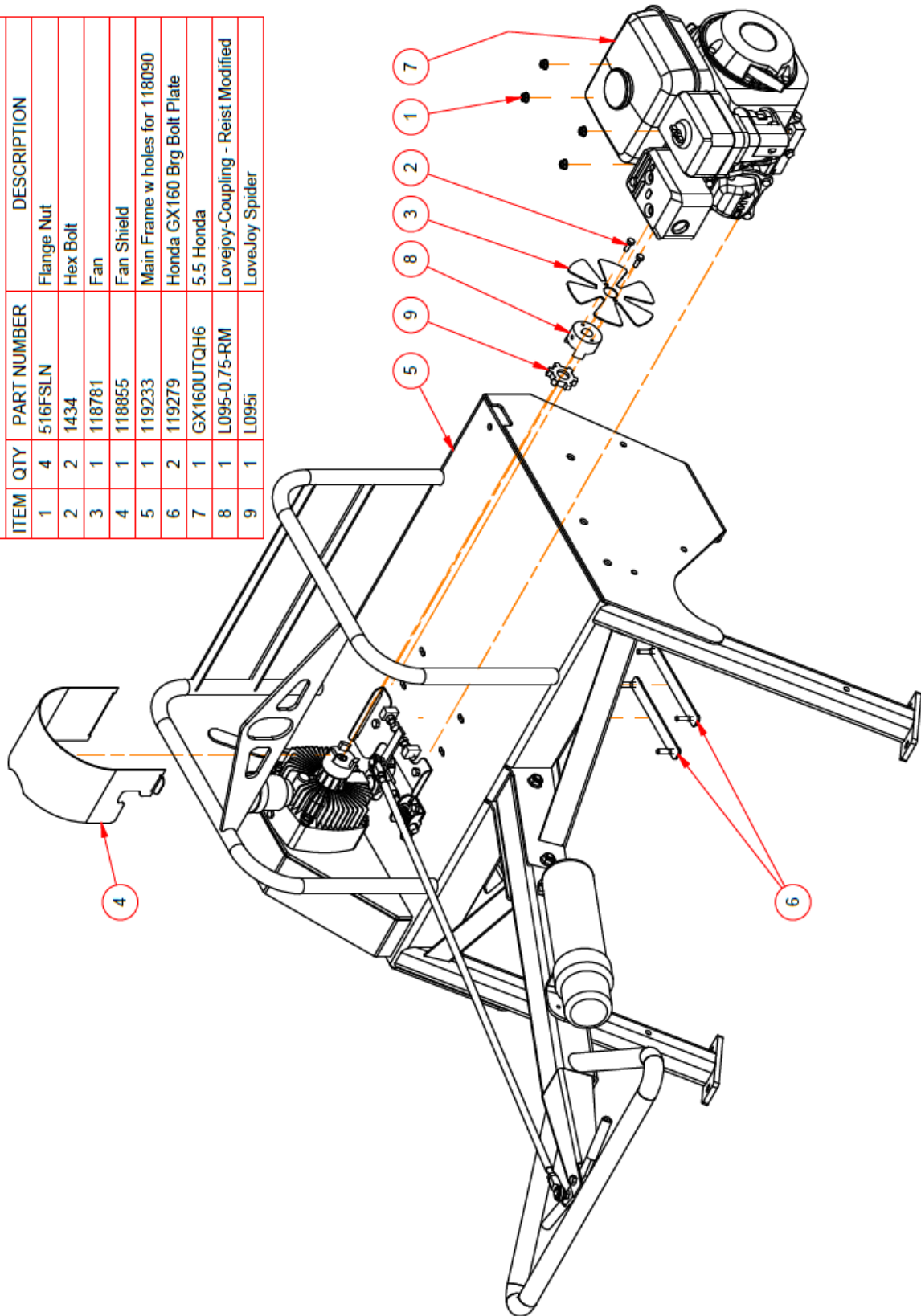


Parts List			
ITEM	QTY	PART NUMBER	DESCRIPTION
1	2	09CW-6S 38	3/8" M-F Rod End
2	2	38CLN	NC Lock Nut
3	1	38CP	3/8x1-1/4 Pin
4	1	38FL	BP Flat Washer
5	5	38FSLN	Flange Nut
6	2	38N	Hex Nut
7	1	40B10X17MM	Sprocket
8	1	181CP	Cotter Pin
9	4	383	Hex Bolt
10	1	700-004	Hydraulic Unit
11	1	107802	Transmission Lever
12	1	118089	Neutral Position
13	1	119233	Main Frame w holes for 118090
14	1	119243	LR30 Drive Control Rod w Rod Ends
15	1	L095X17MM	Lovejoy-Coupling

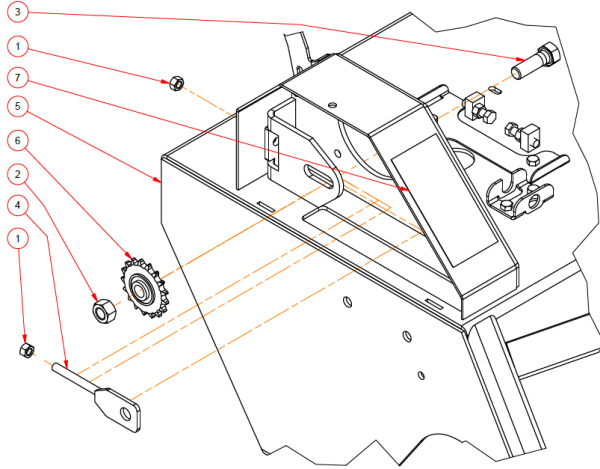
# MOTOR ASSEMBLY PARTS

Parts List

ITEM	QTY	PART NUMBER	DESCRIPTION
1	4	516FSLN	Flange Nut
2	2	1434	Hex Bolt
3	1	118781	Fan
4	1	118855	Fan Shield
5	1	119233	Main Frame w holes for 118090
6	2	119279	Honda GX160 Brg Bolt Plate
7	1	GX160UTQH6	5.5 Honda
8	1	L095-0.75-RM	LoveJoy-Coupling - Reist Modified
9	1	L095i	LoveJoy Spider

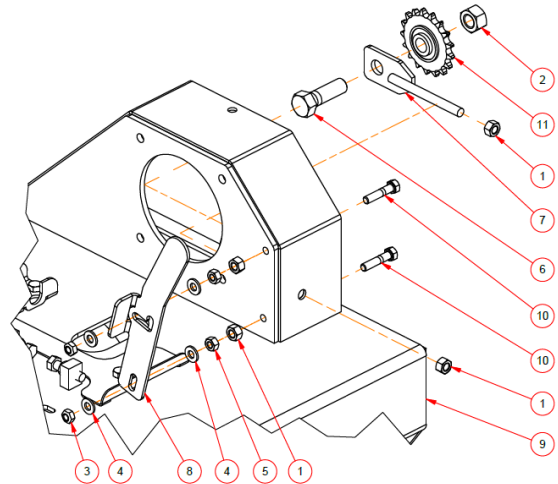


# CHAIN TENSIONER & FREE WHEELING LEVER PARTS

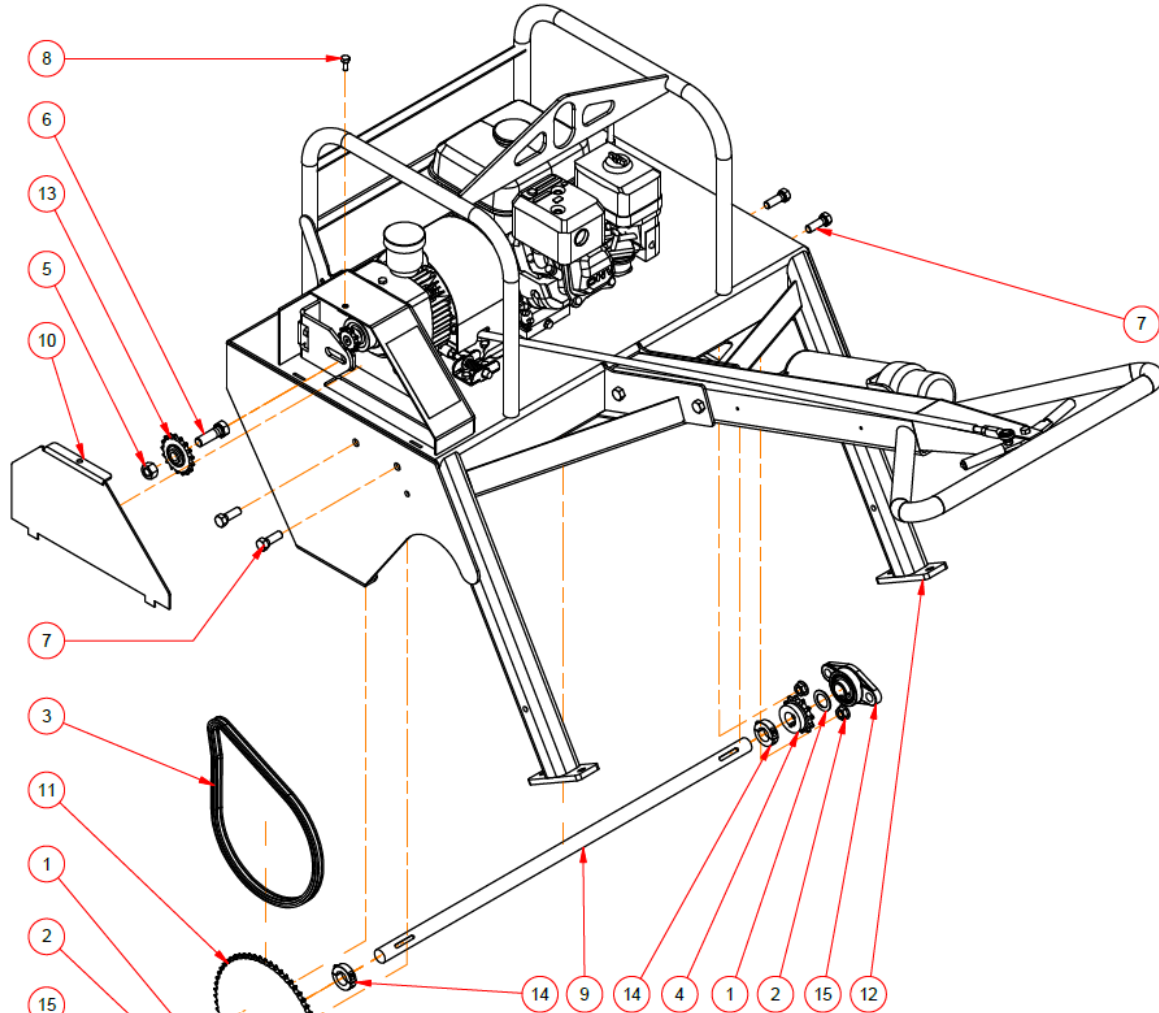


Parts List			
ITEM	QTY	PART NUMBER	DESCRIPTION
1	2	38N	Hex Nut
2	1	58N	Hex Nut
3	1	582	Hex Bolt
4	1	107797	Tightener
5	1	119233	Main Frame w holes for 118090
6	1	20401708	Idler Sprocket
7	1	WD103	Read Manual Decal

Parts List			
ITEM	QTY	PART NUMBER	DESCRIPTION
1	10	38N	Hex Nut
2	1	58N	Hex Nut
3	2	516CLN	NC Lock Nut
4	4	516FL	BP Flat Washer
5	2	516N	Hex Nut
6	1	582	Hex Bolt
7	1	107797	Tightener
8	1	107826	Release Latch
9	1	119233	Main Frame w holes for 118090
10	2	516112	Hex Bolt
11	1	20401708	Idler Sprocket

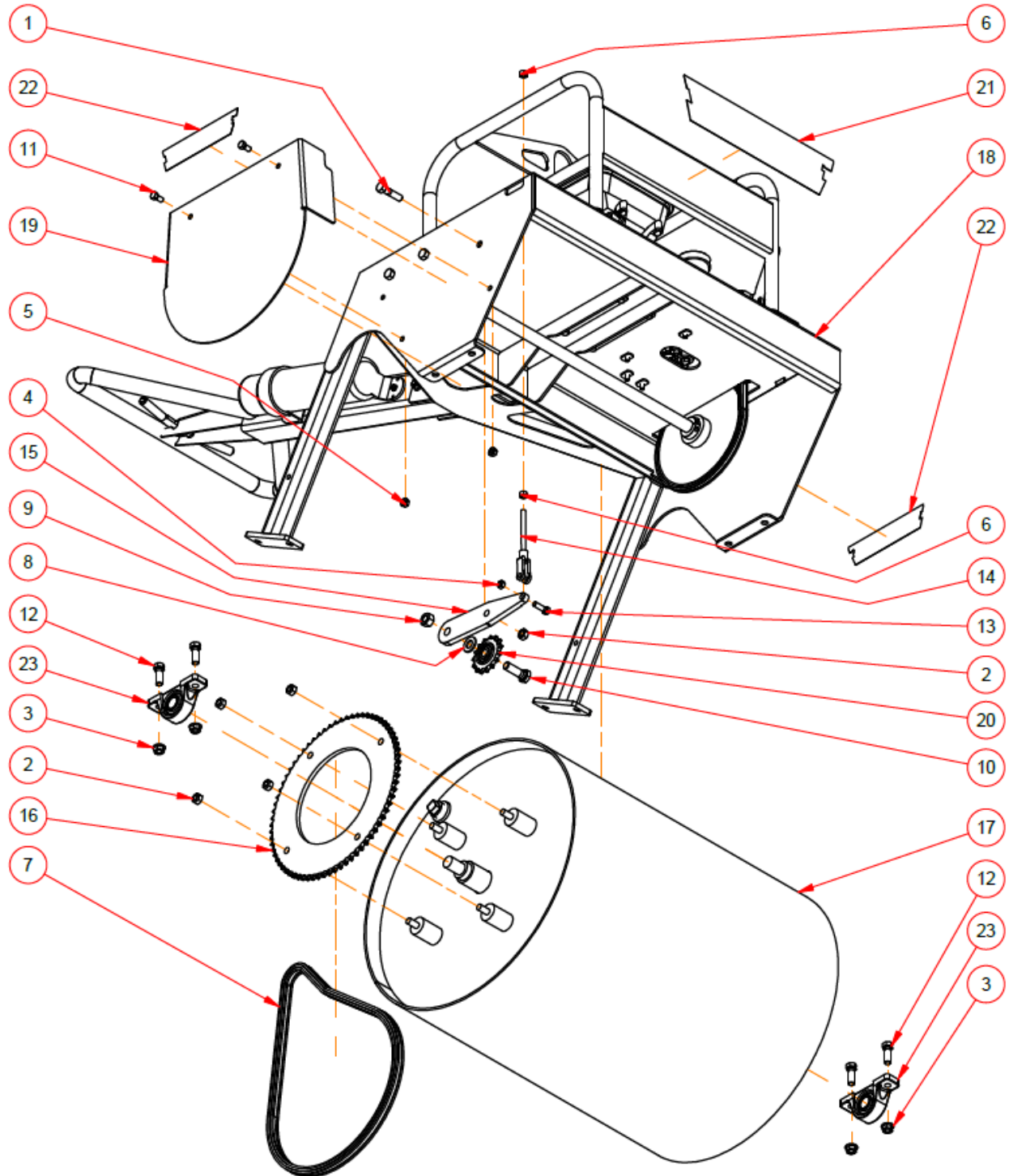


# TRANSMISSION SHAFT PARTS



Parts List			
ITEM	QTY	PART NUMBER	DESCRIPTION
1	2	1M	Machinery Washer
2	4	12FSLN	Flange Nut
3	1	40RC	Roller Chain 70 pins
4	1	50B12x1	sprocket
5	1	58N	Hex Nut
6	1	582	Hex Bolt
7	4	12112	Hex Bolt
8	1	51634	Hex Bolt
9	1	106153	Shaft
10	1	106180	Shield
11	1	106183	Sprocket 40B60
12	1	119233	Main Frame w holes for 118090
13	1	20401708	Idler Sprocket
14	2	SCSD100	Shaft Collar Double Split 1
15	2	UCFL205-100	2 Bolt Flange Bearing

# PACKER ROLL ASSEMBLY DIAGRAM

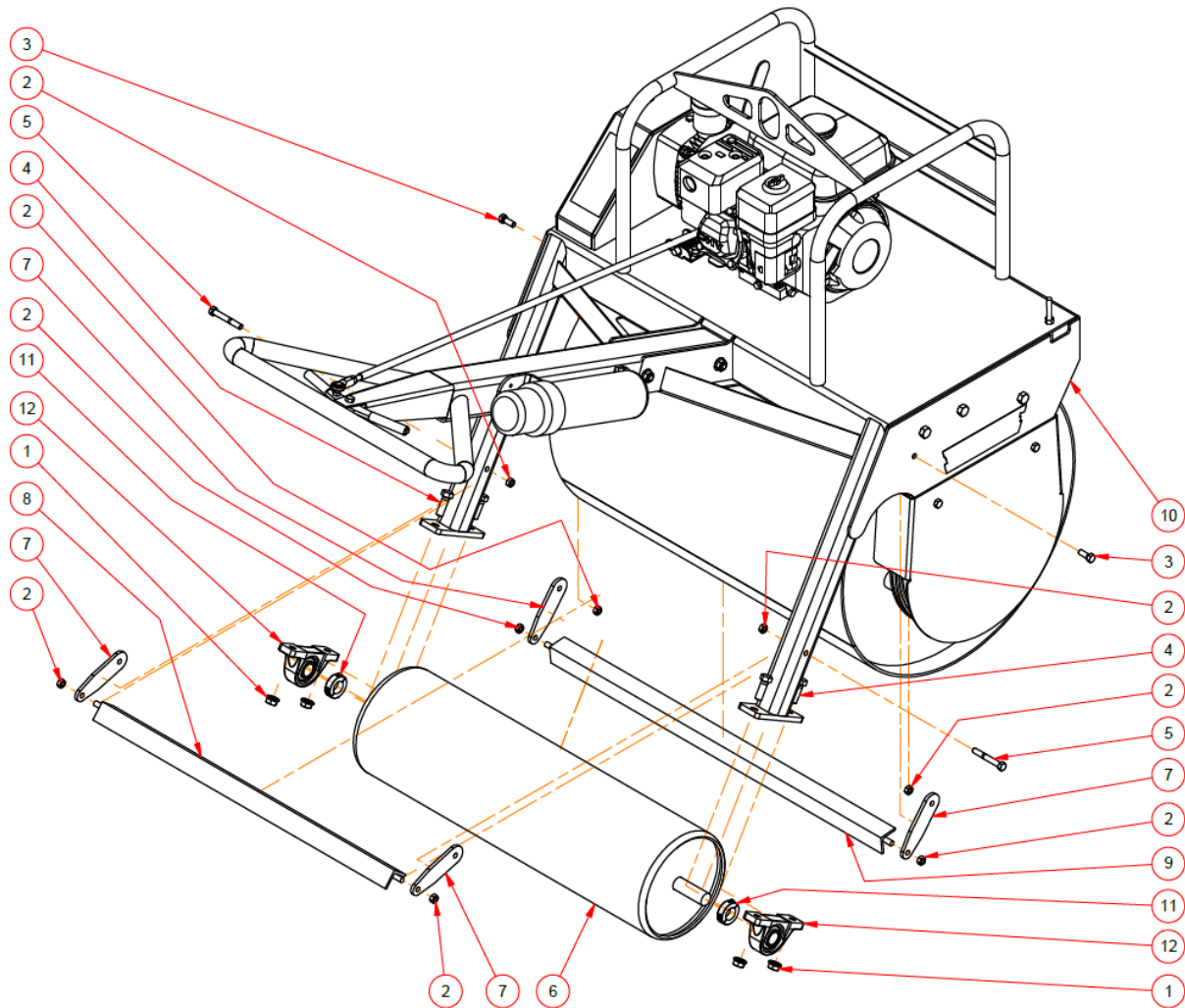




## PACKER ROLL ASSEMBLY PARTS LIST

Parts List			
ITEM	QTY	PART NUMBER	DESCRIPTION
1	1	12*2	Hex Bolt
2	5	12CLN	NC Lock Nut
3	4	12FSLN	Flange Nut
4	1	38CLN	NC Lock Nut
5	3	38FSLN	Flange Nut
6	2	38N	Hex Nut
7	1	50RC	Roller Chain (90 pins)
8	1	58FL	BP Flat Washer
9	1	58N	Hex Nut
10	1	582	Hex Bolt
11	2	3834	Hex Bolt
12	4	12112	Hex Bolt
13	1	38114	Hex Bolt
14	1	106164	Tightener Thread Rod
15	1	106165	Tightener Arm
16	1	106184	Sprocket 50_72
17	1	107796	Packer Roll
18	1	119233	Main Frame w holes for 118090
19	1	119282	LR30 Drom Chain Shield - May 2020
20	1	20501510	50 Idler Sprocket
21	1	RD105	Reist Decal
22	2	RD106	Reist Decal
23	2	UCP205-100	Pillow Block Bearing

# SMALL ROLL & SCRAPER ASSEMBLY



Parts List

ITEM	QTY	PART NUMBER	DESCRIPTION
1	4	12FSLN	Flange Nut
2	6	38CLN	NC Lock Nut
3	2	381	Hex Bolt
4	4	12112	Hex Bolt
5	2	38234	Hex Bolt
6	1	107798	Small Roll
7	4	107843	Scraper Link
8	1	107847	Scraper
9	1	107848	Scraper Top
10	1	119233	Main Frame w holes for 118090
11	2	SCSD100	Shaft Collar Double Split 1
12	2	UCP205-100	Pillow Block Bearing

# WARRANTY INFORMATION

All new REIST machinery is warranted to be free from defects in material or workmanship, which may cause failure under normal usage and service when used for the purpose intended for a period of 12 months. This warranty applies only to a new REIST product, there being no warranty of any nature in respect to new products that have been modified or altered, repaired, neglected, or used in any way, which, in the opinion of REIST adversely affects its performance.

In the event of failure of a part or parts, and upon inspection, REIST is satisfied that failure is due to defective material or workmanship within 12 calendar months from the date of delivery to an end user, such defective part or parts will be repaired or replaced by REIST Industries Inc. It is the responsibility of the buyer, at his expense, to transport the machine or equipment to the manufacturer service shop or to an authorized service depot or, alternatively, to reimburse REIST for any travel or transportation expense involved in fulfilling this warranty.

When requested by REIST, part or parts shall be returned for inspection, transportation prepaid, to a place designated by REIST. IN NO EVENT, SHALL THE BUYER BE ENTITLED TO RECOVER FOR INCIDENTAL OR CONSEQUENTIAL DAMAGES, INCLUDING, BUT NOT LIMITED TO, LOSS OF PRODUCT, INCONVENIENCE, RENTAL OR REPLACEMENT EQUIPMENT, LOSS OF PROFIT, OR OTHER COMMERCIAL LOSS.

This warranty becomes void and null if the equipment is modified, breaks down as the result of an accident, is not operated according to manufacturer's recommendations, damaged by negligence or if maintenance has not been carried out as specified.

THIS WARRANTY IS NOT TRANSFERABLE

***Proof of Purchase – Retain for your records***

Date of Purchase (yyyy/mm/dd)		Model	Serial #	
Dealer Purchased From		City	State or Province	Country
First Name		Last Name	Phone Number (include area code)	
Address			State or Province	Country
City	Postal Code	<b>Return to: REIST Industries Inc.</b> <b>100 Union St., Elmira, Ontario, Canada N3B 2Z2 (519) 669-1501</b>		



***Proof of Purchase***

Date of Purchase (yyyy/mm/dd)		Model	Serial #	
Dealer Purchased From		City	State or Province	Country
First Name		Last Name	Phone Number (include area code)	
Address			State or Province	Country
City	Postal Code	<b>Return to: REIST Industries Inc.</b> <b>100 Union St., Elmira, Ontario, Canada N3B 2Z2 (519) 669-1501</b>		

REIST Industries Inc.  
100 Union Street  
Elmira, Ontario, Canada  
N3B 2Z2

